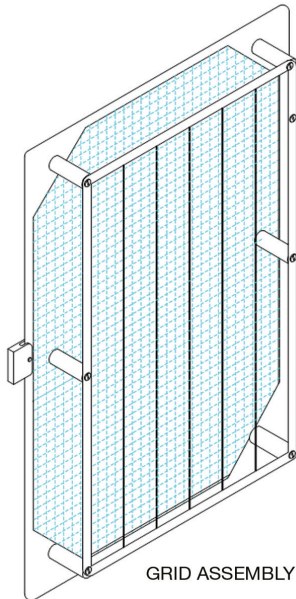


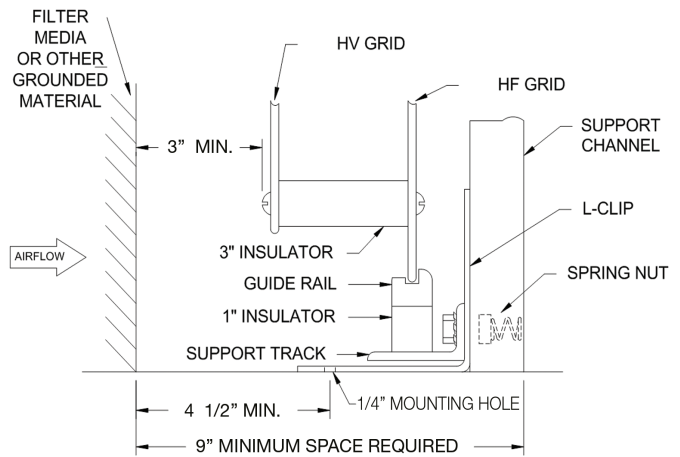
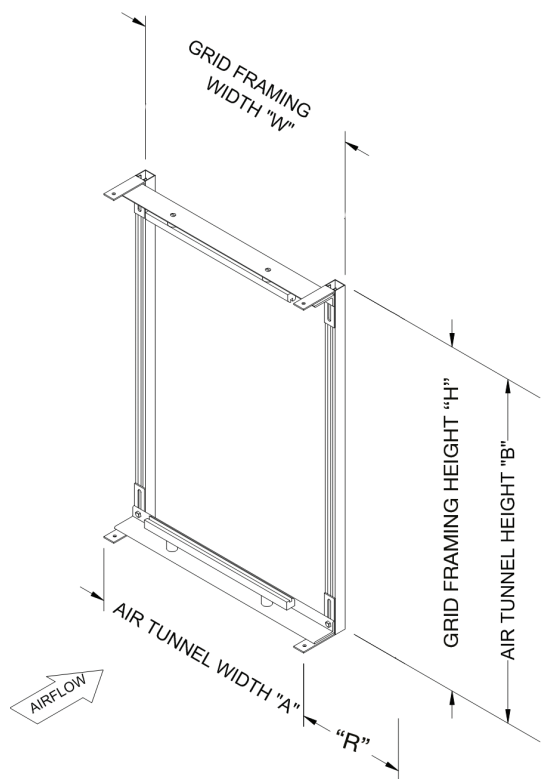
GRIDS

SUPPORT FRAMING



1. If support framing does not fill the existing plenum section, blankoff panels must be provided by others to prevent air bypass.
2. All components shown are supplied by CosaTron, except filter media or other grounded material.
3. Fasteners as required to secure the framing to the existing plenum (through 1/4" hole in L clip at top and bottom of framing) provided by others. Fastening method, by others, dependent upon type of plenum construction.
4. Access space is required either to the side of the assembly or upstream of the assembly. "R" indicates minimum side clearance space for proper grid removal through an access panel. Standard unit comes equipped for upstream lift-out grids where side access is not possible.
5. Any access panels or doors leading to the grid assembly must have plenum safety door switches.
6. All models are shipped disassembled and require field assembly.
7. This drawing is not to be used as an installation guide. Refer to the mechanical and electrical installation instruction manuals for proper assembly and wiring. Download from www.cosatron.com.

® CosaTron is a registered trademark of CRS Industries, Inc. Made in the USA.
For more information visit www.cosatron.com



TAG	MODEL SIZE	DESIGN CFM	AVG. FPM	A	B	W	H	R	MODEL # 1101-1W1H	
									SCALE: NTS	REV. BY: MS
									REV. DATE: 8-24-14	REV. #: 6
									FILE/CAD NAME: 1101-1W1H.6	

SCALE: NTS ALL DIMENSIONS IN INCHES OR AS NOTED

JOB NAME:	ENGINEER:
JOB NUMBER:	CONTRACTOR:
REPRESENTATIVE:	ARCHITECT:
LOCATION:	SUBMITTAL DATE: